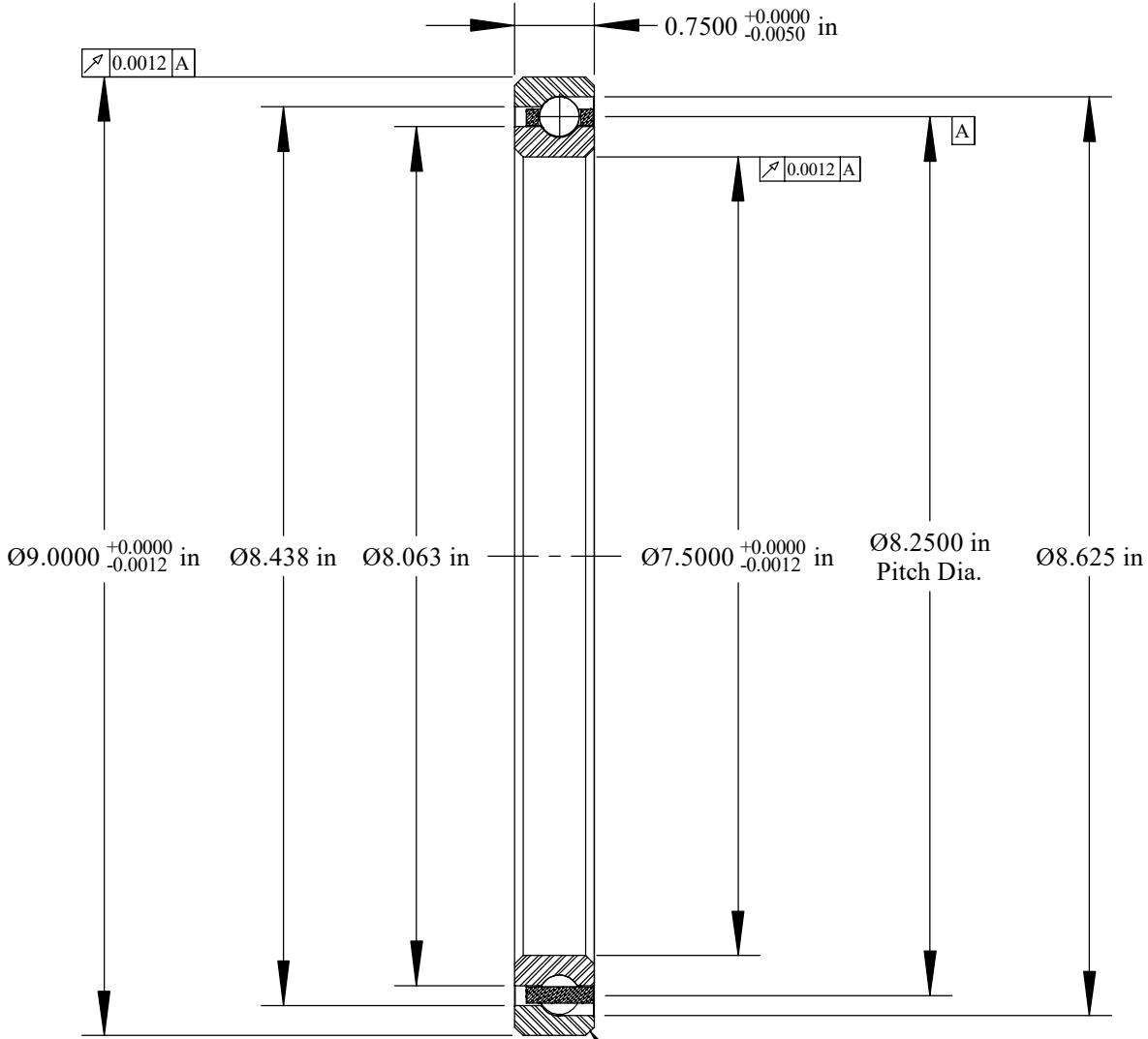
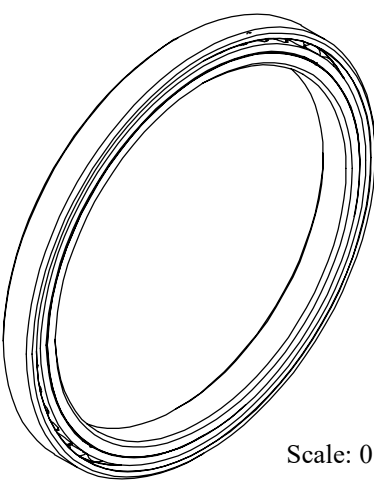


Cage Code: 704Q7

RevNo	Revision note	Date	Signature	Checked
-------	---------------	------	-----------	---------



Will Clear 0.080
 Max. Fillet Radius
 4 Exterior Corners
 Scale: 0.6:1



Scale: 0.3:1

	OUTER	INNER	SEPARATOR	BALL
MATERIAL	52100	52100	BRASS	52100
HARDNESS	Rc 59-62	Rc 59-62		
RACE RUN-OUT	OUTER	INNER		
ABEC RATING	PRELOAD		ROLLING ELEMENT	
1	N/A		QUANTITY 45	SIZE 3/8
RADIAL LOAD	THRUST LOAD		MOMENT LOAD	
DYNAMIC: 5052 Lbs. STATIC: 11,000 Lbs.	DYNAMIC: 12,130 Lbs. STATIC: 31,740 Lbs.		N/A	
RADIAL PLAY	CONTACT ANGLE		LIMITING SPEED	
N/A	30°		2800 RPM	
LUBRICATION	SEAL		BEARING WEIGHT	
LIGHT OIL PRESERVATIVE	N/A		3.39 Lbs.	

SSB
 thin section bearings

Corporate Headquarters
 15151 Prater Drive
 Covington, GA 30014
 (800) 431-1980
 www.ritbearing.com

UNLESS OTHERWISE SPECIFIED ALL DIMENSIONS IN INCHES

Designed by ML	Checked by ML	This drawing and the information contained herein are proprietary and the property of Ritbearing Corporation.	
RF075AR0		Angular Contact Thin Section Ball Bearing	
File name RF075AR0	Date May 11, 2020	REVISION A	Sheet 1 of 1