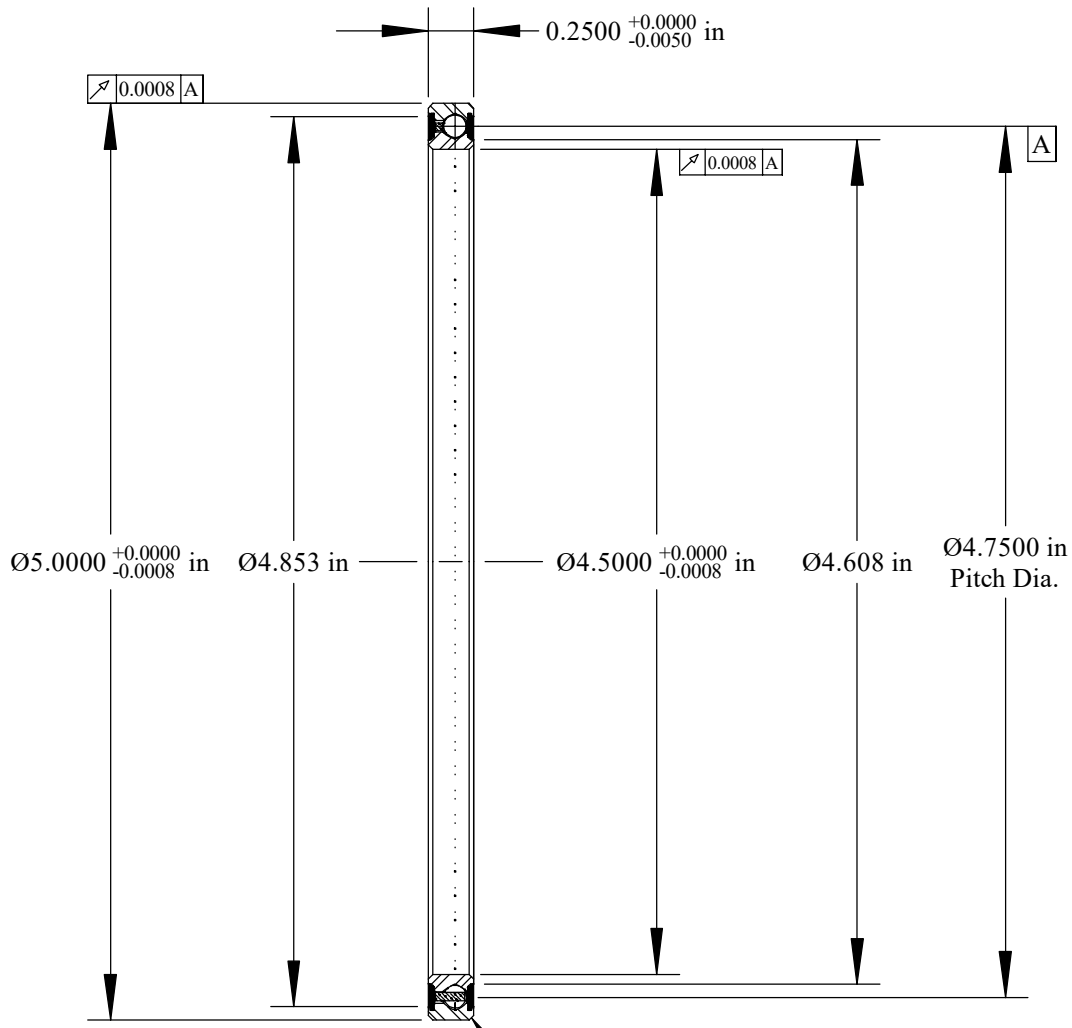
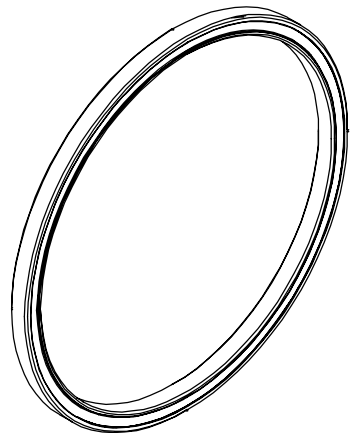


Cage Code: 704Q7

RevNo	Revision note	Date	Signature	Checked
-------	---------------	------	-----------	---------



Will Clear 0.025  
Max. Fillet Radius  
4 Exterior Corners  
Scale: 1:1



Scale: 0.5:1

	OUTER	INNER	SEPARATOR	BALL
MATERIAL	52100	52100	BRASS	52100
HARDNESS	Rc 59-62	Rc 59-62		
RACE RUN-OUT	OUTER	INNER		
ABEC RATING	PRELOAD		ROLLING ELEMENT	
1	N/A		QUANTITY	SIZE
			57	1/8
RADIAL LOAD	THRUST LOAD		MOMENT LOAD	
DYNAMIC: 810 Lbs. STATIC: 1442 Lbs.	DYNAMIC: 1305 Lbs. STATIC: 3604 Lbs.		DYNAMIC: 1440 in-Lbs. STATIC: 3424 in-Lbs.	
RADIAL PLAY	CONTACT ANGLE		LIMITING SPEED	
0.0016 0.0026	N/A		555 RPM	
LUBRICATION	SEAL		BEARING WEIGHT	
Mobil 28 25-35% Fill	2 Teflon		0.12 Lbs.	

**SSB**  
thin section bearings

Corporate Headquarters  
15151 Prater Drive  
Covington, GA 30014  
(800) 431-1980  
www.ritbearing.com

UNLESS OTHERWISE SPECIFIED ALL DIMENSIONS IN INCHES

Designed by ML	Checked by ML	This drawing and the information contained herein are proprietary and the property of Ritbearing Corporation.	
<b>RJA045XP0</b>		4 Point Contact Thin Section Ball Bearing	
File name RJA045XP0L	Date May 9, 2019	REVISION A	Sheet 1 of 1