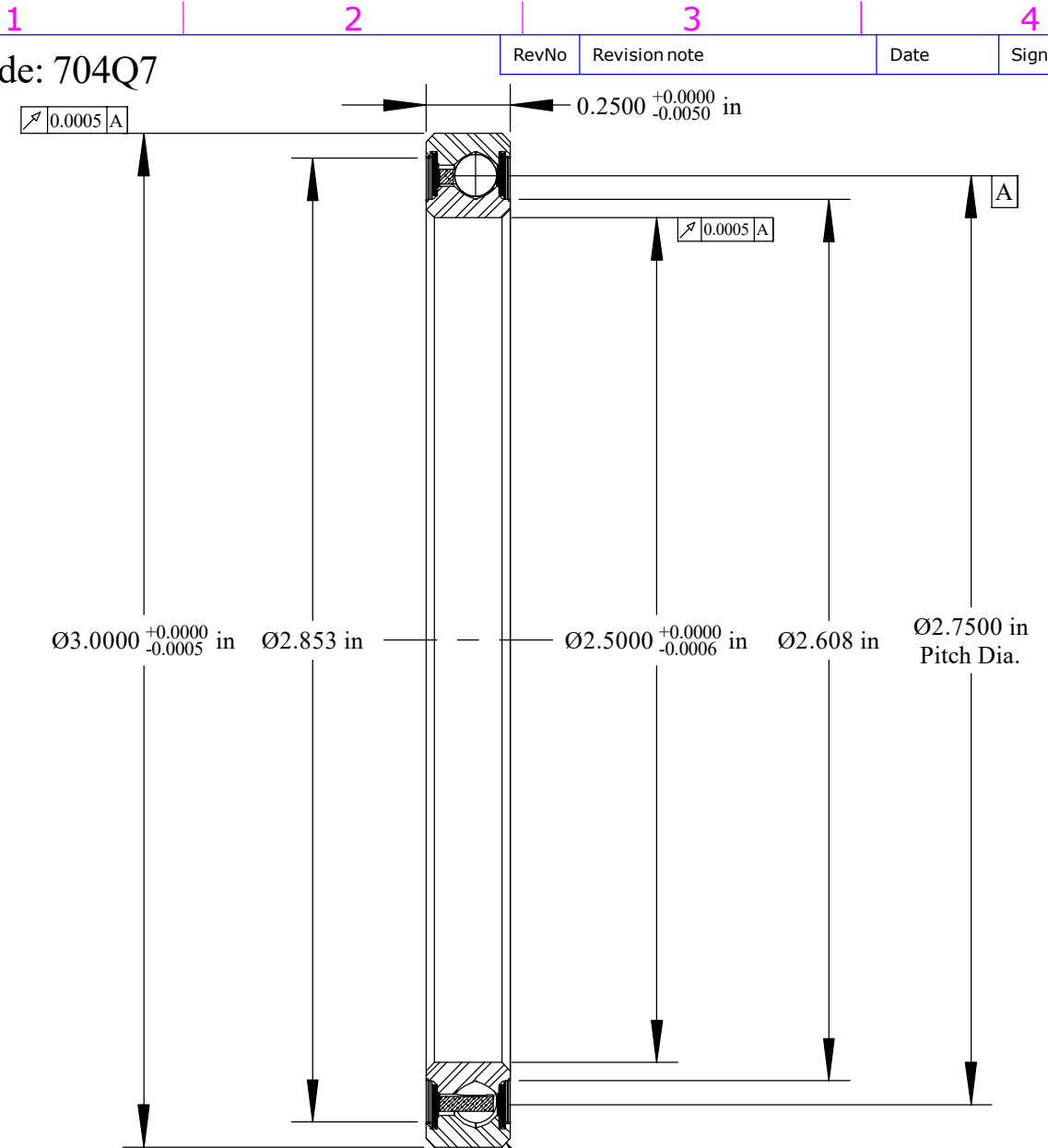
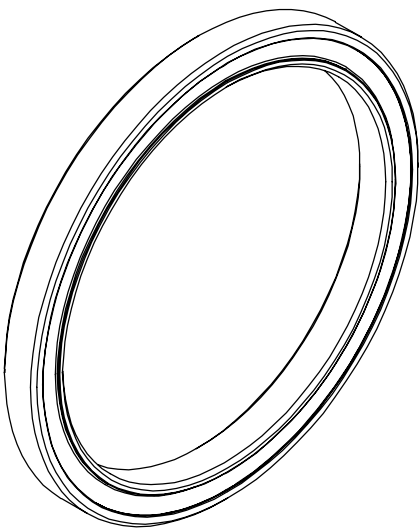


Cage Code: 704Q7

RevNo	Revision note	Date	Signature	Checked
-------	---------------	------	-----------	---------



Scale: 2:1  
 Will Clear 0.025  
 Max. Fillet Radius  
 4 Exterior Corners



Scale: 1:1

	OUTER	INNER	SEPARATOR	BALL
MATERIAL	52100	52100	BRASS	52100
HARDNESS	Rc 59-62	Rc 59-62		
RACE RUN-OUT	OUTER	INNER		
ABEC RATING	PRELOAD		ROLLING ELEMENT	
1	N/A		QUANTITY	SIZE
			27	1/8
RADIAL LOAD	THRUST LOAD		MOMENT LOAD	
DYNAMIC: 580 Lbs. STATIC: 835 Lbs.	DYNAMIC: 905 Lbs. STATIC: 2087 Lbs.		DYNAMIC: 600 in-Lbs. STATIC: 1148 in-Lbs.	
RADIAL PLAY	CONTACT ANGLE		LIMITING SPEED	
0.0012 0.0022	N/A		1200 RPM	
LUBRICATION	SEAL		BEARING WEIGHT	
Mobil 28 25-35% Fill	2 Buna-N		0.12 Lbs.	

**Corporate Headquarters**  
 15151 Prater Drive  
 Covington, GA 30014  
 (800) 431-1980  
 www.rfbearing.com

UNLESS OTHERWISE SPECIFIED ALL DIMENSIONS IN INCHES

Designed by ML	Checked by ML	This drawing and the information contained herein are proprietary and the property of Rfbearing Corporation.	
<b>RJA025XP0</b>		4 Point Contact Thin Section Ball Bearing	
File name RJA025XP0	Date May 9, 2019	REVISION A	Sheet 1 of 1