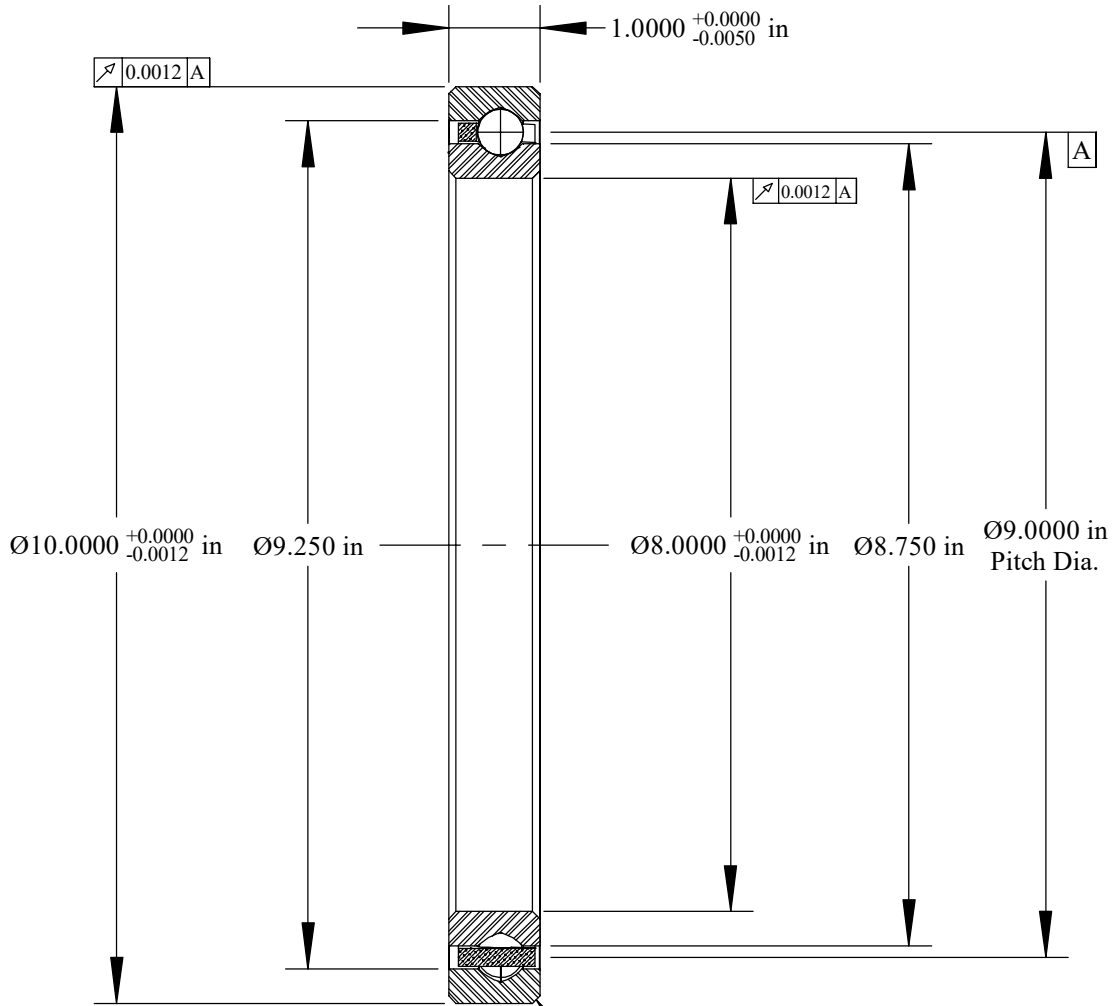
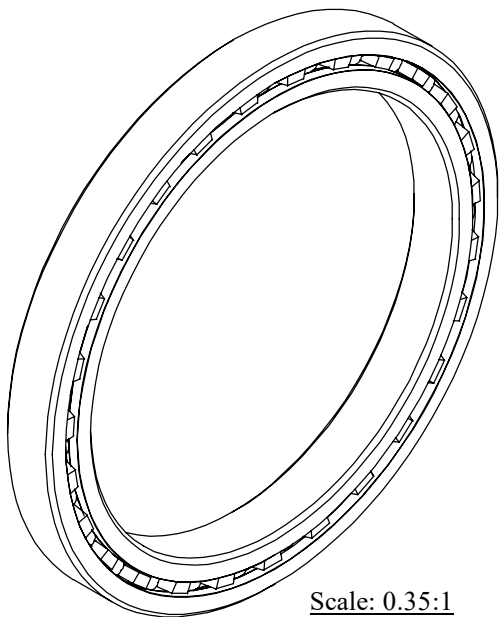


Cage Code: 704Q7

RevNo	Revision note	Date	Signature	Checked
-------	---------------	------	-----------	---------



Scale: 0.5:1
 Will Clear 0.080
 Max. Fillet Radius
 4 Exterior Corners



Scale: 0.35:1

	OUTER	INNER	SEPARATOR	BALL
MATERIAL	52100	52100	BRASS	52100
HARDNESS	Re 59-62	Re 59-62		
RACE RUN-OUT	OUTER	INNER		
ABEC RATING	PRELOAD		ROLLING ELEMENT	
1	N/A		QUANTITY	SIZE
			27	1/2
RADIAL LOAD	THRUST LOAD		MOMENT LOAD	
DYNAMIC: 10,882 Lbs. STATIC: 14,770 Lbs.	DYNAMIC: 16,650 Lbs. STATIC: 36,940 Lbs.		DYNAMIC: 36,743 Lbs.-in. STATIC: 66,480 Lbs.-in.	
RADIAL PLAY	CONTACT ANGLE		LIMITING SPEED	
0.0024 0.0034	N/A		500 RPM	
LUBRICATION	SEAL		BEARING WEIGHT	
LIGHT OIL PRESERVATIVE	N/A		5.50 Lbs.	

UNLESS OTHERWISE SPECIFIED ALL DIMENSIONS IN INCHES

Designed by ML	Checked by ML	This drawing and the information contained herein are proprietary and the property of Ritbearing Corporation.
-------------------	------------------	---

RG080XP0

4 Point Contact
Thin Section
Ball Bearing

File name RG080XP0	Date March 25, 2020	REVISION A	Sheet 1 of 1
-----------------------	------------------------	---------------	-----------------

Corporate Headquarters
 15151 Prater Drive
 Covington, GA 30014
 (800) 431-1980
 www.ritbearing.com