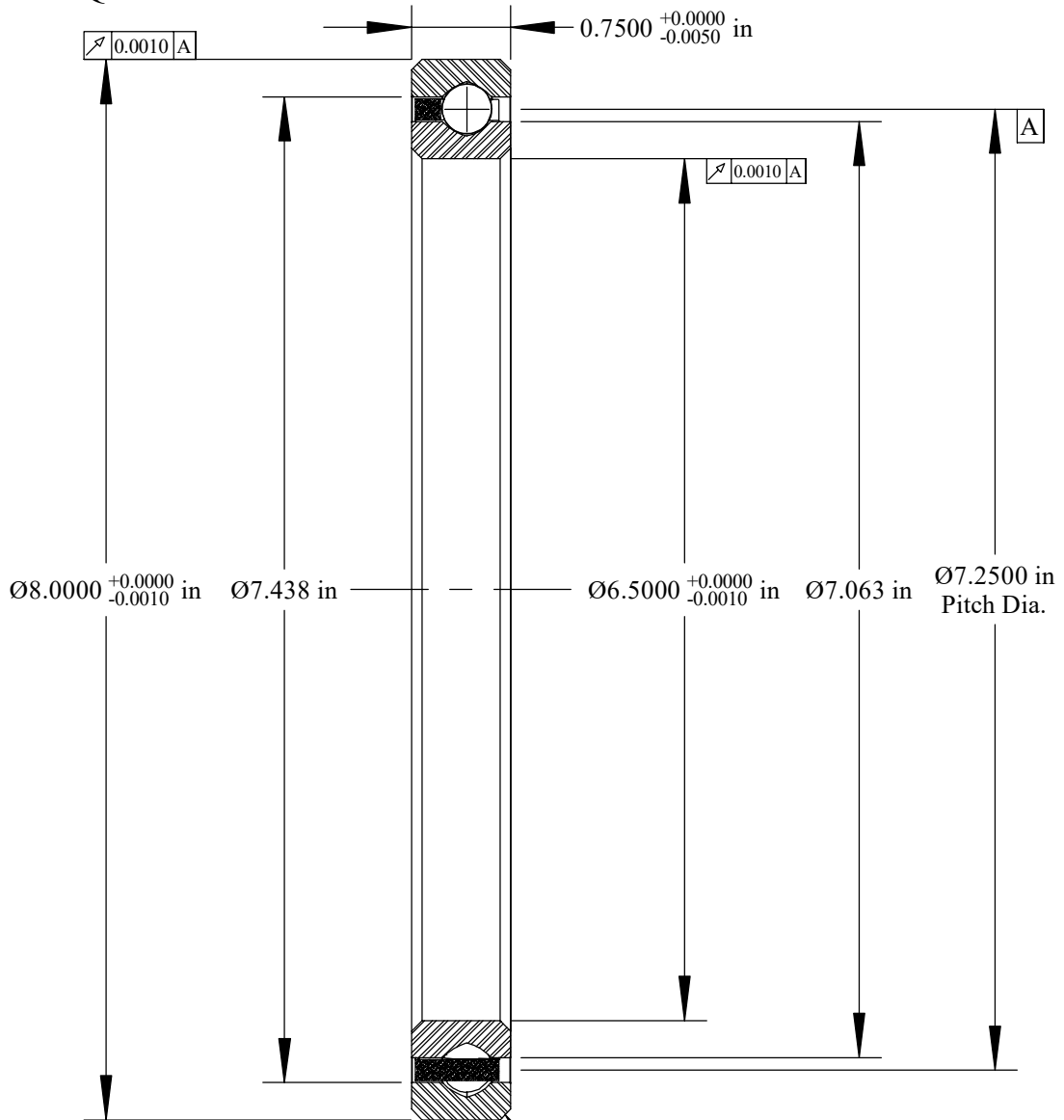
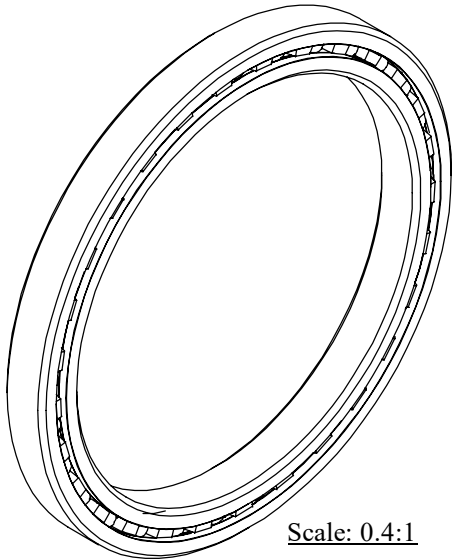


Cage Code: 704Q7

| | | | | |
|-------|---------------|------|-----------|---------|
| RevNo | Revision note | Date | Signature | Checked |
|-------|---------------|------|-----------|---------|



Will Clear 0.080
Max. Fillet Radius
4 Exterior Corners
Scale: 0.75:1



Scale: 0.4:1

| | | | | |
|---|---|----------|---|-------|
| | OUTER | INNER | SEPARATOR | BALL |
| MATERIAL | 52100 | 52100 | BRASS | 52100 |
| HARDNESS | Rc 59-62 | Rc 59-62 | | |
| RACE RUN-OUT | OUTER | INNER | | |
| ABEC RATING | PRELOAD | | ROLLING ELEMENT | |
| 1 | N/A | | QUANTITY | SIZE |
| | | | 29 | 3/8 |
| RADIAL LOAD | THRUST LOAD | | MOMENT LOAD | |
| DYNAMIC: 5880 Lbs. STATIC: 8180 Lbs. | DYNAMIC: 9050 Lbs. STATIC: 20,460 Lbs. | | DYNAMIC: 15,993 Lbs.-in. STATIC: 29,660 Lbs.-in. | |
| RADIAL PLAY | CONTACT ANGLE | | LIMITING SPEED | |
| 0.0020 0.0030 | N/A | | 600 RPM | |
| LUBRICATION | SEAL | | BEARING WEIGHT | |
| LIGHT OIL PRESERVATIVE | N/A | | 2.90 Lbs. | |



Corporate Headquarters
15151 Prater Drive
Covington, GA 30014
(800) 431-1980
www.ritbearing.com

UNLESS OTHERWISE SPECIFIED ALL DIMENSIONS IN INCHES

| | | | |
|-----------------------|------------------------|---|-----------------|
| Designed by ML | Checked by ML | This drawing and the information contained herein are proprietary and the property of Ritbearing Corporation. | |
| RF065XP0 | | Four Point Contact Thin Section Ball Bearing | |
| File name RF065XP0 | Date March 23, 2020 | REVISION A | Sheet 1 of 1 |