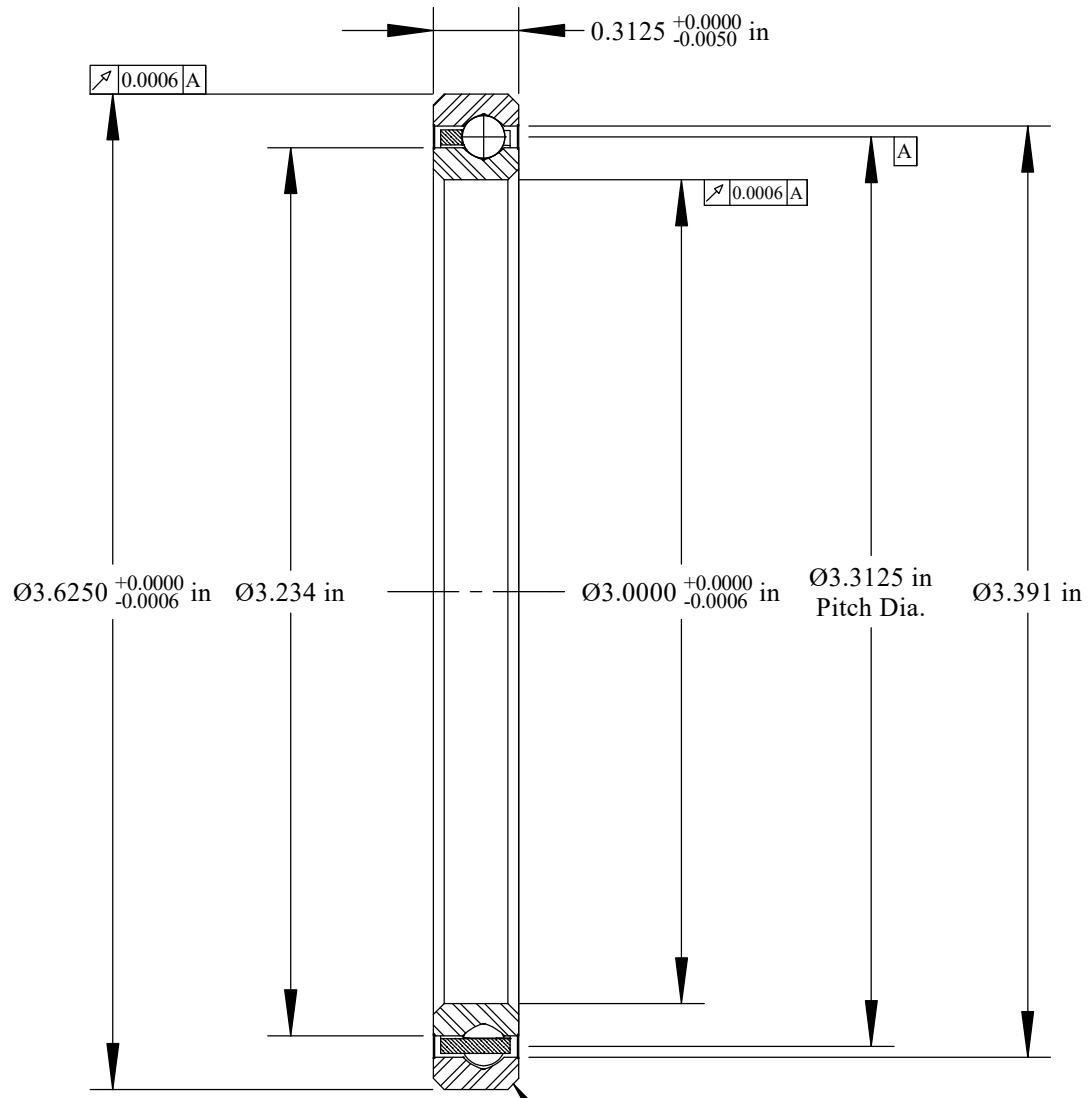
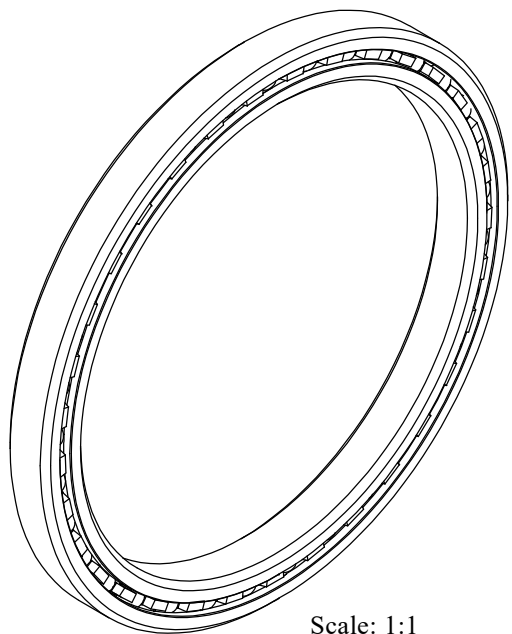


Cage Code: 704Q7

RevNo	Revision note	Date	Signature	Checked
-------	---------------	------	-----------	---------



Scale: 1.5:1
 Will Clear 0.040
 Max. Fillet Radius
 4 Exterior Corners



Scale: 1:1

	OUTER	INNER	SEPARATOR	BALL
MATERIAL	52100	52100	BRASS	52100
HARDNESS	Rc 59-62	Rc 59-62		
RACE RUN-OUT	OUTER	INNER		
ABEC RATING	PRELOAD		ROLLING ELEMENT	
1	N/A		QUANTITY	SIZE
			23	5/32
RADIAL LOAD	THRUST LOAD		MOMENT LOAD	
DYNAMIC: 933 Lbs. STATIC: 1340 Lbs.	DYNAMIC: 1440 Lbs. STATIC: 3350 Lbs.		DYNAMIC: 986 Lbs.-in. STATIC: 2130 Lbs.-in.	
RADIAL PLAY	CONTACT ANGLE		LIMITING SPEED	
0.0012 0.0022	N/A		1,350 RPM	
LUBRICATION	SEAL		BEARING WEIGHT	
LIGHT OIL PRESERVATIVE	N/A		0.24 Lbs.	

UNLESS OTHERWISE SPECIFIED ALL DIMENSIONS IN INCHES

SSD
thin section bearings

Corporate Headquarters
 15151 Prater Drive
 Covington, GA 30014
 (800) 431-1980
 www.ritbearing.com

Designed by ML	Checked by ML	This drawing and the information contained herein are proprietary and the property of Ritbearing Corporation.	
RB030XP0		Four Point Contact Thin Section Ball Bearing	
File name RB030XP0	Date July 25, 2018	REVISION A	Sheet 1 of 1