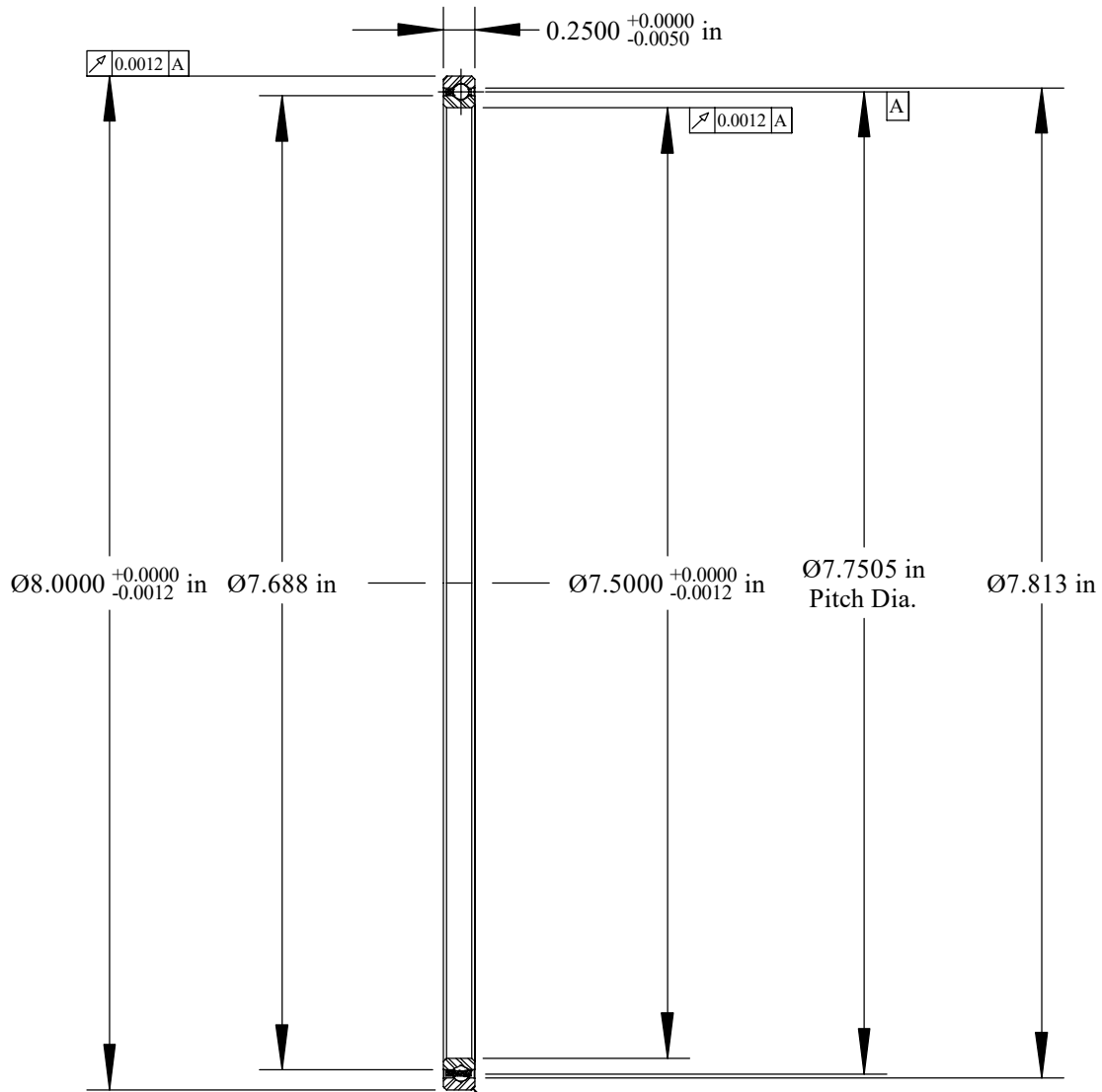


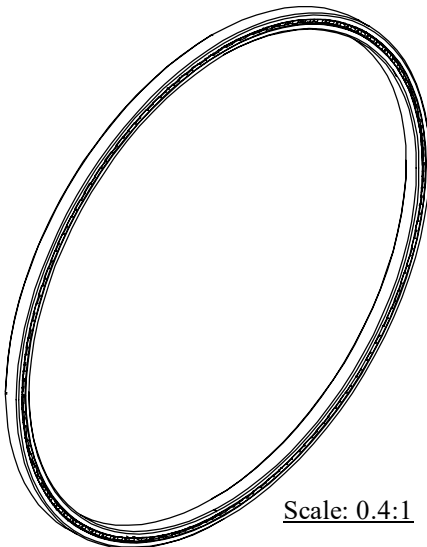
Cage Code: 704Q7

RevNo	Revision note	Date	Signature	Checked
-------	---------------	------	-----------	---------



Will Clear 0.025
Max. Fillet Radius
4 Exterior Corners

Scale: 0.7:1



Scale: 0.4:1

	OUTER	INNER	SEPARATOR	BALL
MATERIAL	52100	52100	BRASS	52100
HARDNESS	Rc 59-62	Rc 59-62		
RACE RUN-OUT	OUTER	INNER		
ABEC RATING	PRELOAD		ROLLING ELEMENT	
1	N/A		QUANTITY	SIZE
			93	1/8
RADIAL LOAD	THRUST LOAD		MOMENT LOAD	
DYNAMIC: 1089 Lbs. STATIC: 2350 Lbs.	DYNAMIC: 1810 Lbs. STATIC: 5880 Lbs.		DYNAMIC: 3165 Lbs. STATIC: 9120 Lbs.	
RADIAL PLAY	CONTACT ANGLE		LIMITING SPEED	
0.0024 0.0034	N/A		390 RPM	
LUBRICATION	SEAL		BEARING WEIGHT	
LIGHT OIL PRESERVATIVE	N/A		0.34 Lbs.	

UNLESS OTHERWISE SPECIFIED ALL DIMENSIONS IN INCHES

Designed by ML	Checked by ML	This drawing and the information contained herein are proprietary and the property of Ritbearing Corporation.
-------------------	------------------	---

RA075XP0

Radial Thin Section
Ball Bearing

File name RA075XP0	Date January 3, 2018	REVISION A	Sheet 1 of 1
-----------------------	-------------------------	---------------	-----------------



Corporate Headquarters
15151 Prater Drive
Covington, GA 30014
(800) 431-1980
www.ritbearing.com