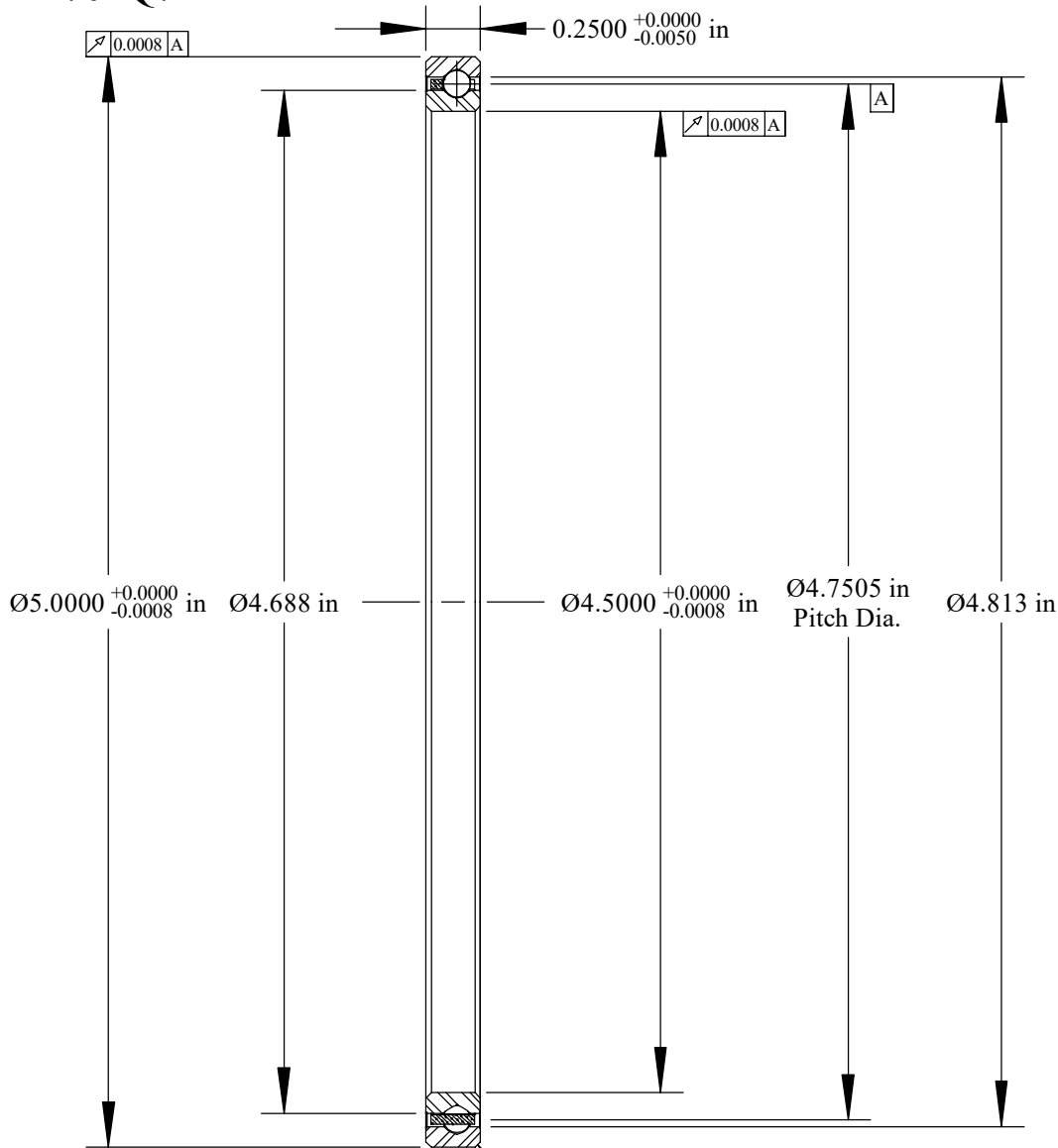


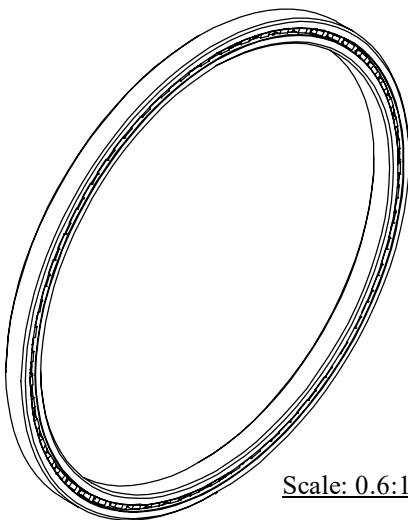
Cage Code: 704Q7

RevNo	Revision note	Date	Signature	Checked
-------	---------------	------	-----------	---------



Will Clear 0.025
Max. Fillet Radius
4 Exterior Corners

Scale: 1.2:1



Scale: 0.6:1

	OUTER	INNER	SEPARATOR	BALL
MATERIAL	52100	52100	BRASS	52100
HARDNESS	Rc 59-62	Rc 59-62		
RACE RUN-OUT	OUTER	INNER		
ABEC RATING	PRELOAD		ROLLING ELEMENT	
1	N/A		QUANTITY	SIZE
			57	1/8
RADIAL LOAD	THRUST LOAD		MOMENT LOAD	
DYNAMIC: 809 Lbs. STATIC: 1440 Lbs.	DYNAMIC: 1310 Lbs. STATIC: 3600 Lbs.		DYNAMIC: 1441 Lbs. STATIC: 3420 Lbs.	
RADIAL PLAY	CONTACT ANGLE		LIMITING SPEED	
0.0016 0.0026	N/A		780 RPM	
LUBRICATION	SEAL		BEARING WEIGHT	
LIGHT OIL PRESERVATIVE	N/A		0.22 Lbs.	

UNLESS OTHERWISE SPECIFIED ALL DIMENSIONS IN INCHES

Designed by ML	Checked by ML	This drawing and the information contained herein are proprietary and the property of Ritbearing Corporation.
-------------------	------------------	---------------------------------------------------------------------------------------------------------------

RA045XP0

Radial Thin Section
Ball Bearing

File name RA045XP0	Date December 13, 2017	REVISION A	Sheet 1 of 1
-----------------------	---------------------------	---------------	-----------------



Corporate Headquarters
15151 Prater Drive
Covington, GA 30014
(800) 431-1980
www.ritbearing.com