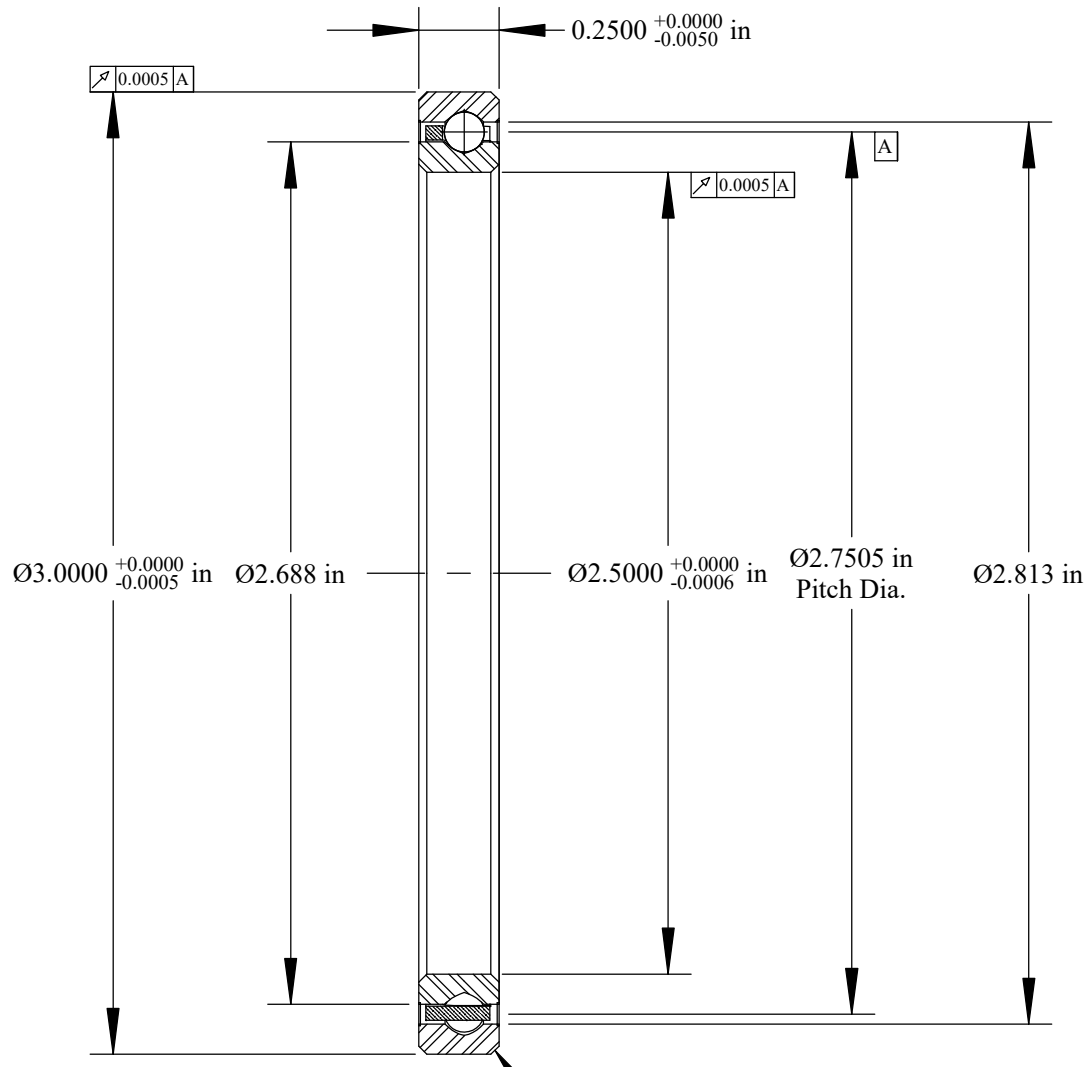
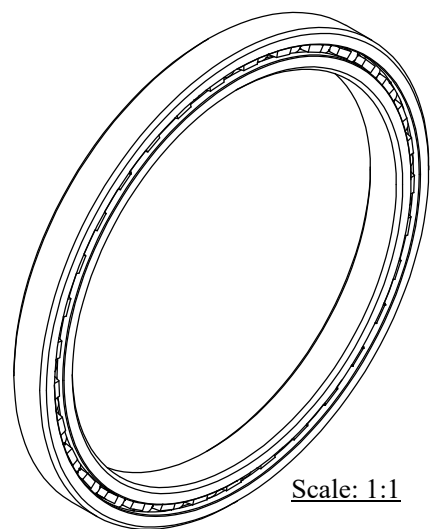


Cage Code: 704Q7

RevNo	Revision note	Date	Signature	Checked
-------	---------------	------	-----------	---------



Scale: 2:1 Will Clear 0.025
Max. Fillet Radius
4 Exterior Corners



Scale: 1:1

	OUTER	INNER	SEPARATOR	BALL
MATERIAL	52100	52100	BRASS	52100
HARDNESS	Rc 59-62	Rc 59-62		
RACE RUN-OUT	OUTER	INNER		
ABEC RATING	PRELOAD		ROLLING ELEMENT	
1	N/A		QUANTITY	SIZE
			33	1/8
RADIAL LOAD	THRUST LOAD		MOMENT LOAD	
DYNAMIC: 583 Lbs. STATIC: 830 Lbs.	DYNAMIC: 910 Lbs. STATIC: 2090 Lbs.		DYNAMIC: 601 Lbs. STATIC: 1150 Lbs.	
RADIAL PLAY	CONTACT ANGLE		LIMITING SPEED	
0.0012 0.0024	N/A		4,400 RPM	
LUBRICATION	SEAL		BEARING WEIGHT	
LIGHT OIL PRESERVATIVE	N/A		0.13 Lbs.	

UNLESS OTHERWISE SPECIFIED ALL DIMENSIONS IN INCHES

SSB
thin section bearings

Corporate Headquarters
15151 Prater Drive
Covington, GA 30014
(800) 431-1980
www.ritbearing.com

Designed by ML	Checked by ML	This drawing and the information contained herein are proprietary and the property of Ritbearing Corporation.	
RA025XP0		Radial Thin Section Ball Bearing	
File name RA025XP0	Date November 3, 2017	REVISION A	Sheet 1 of 1