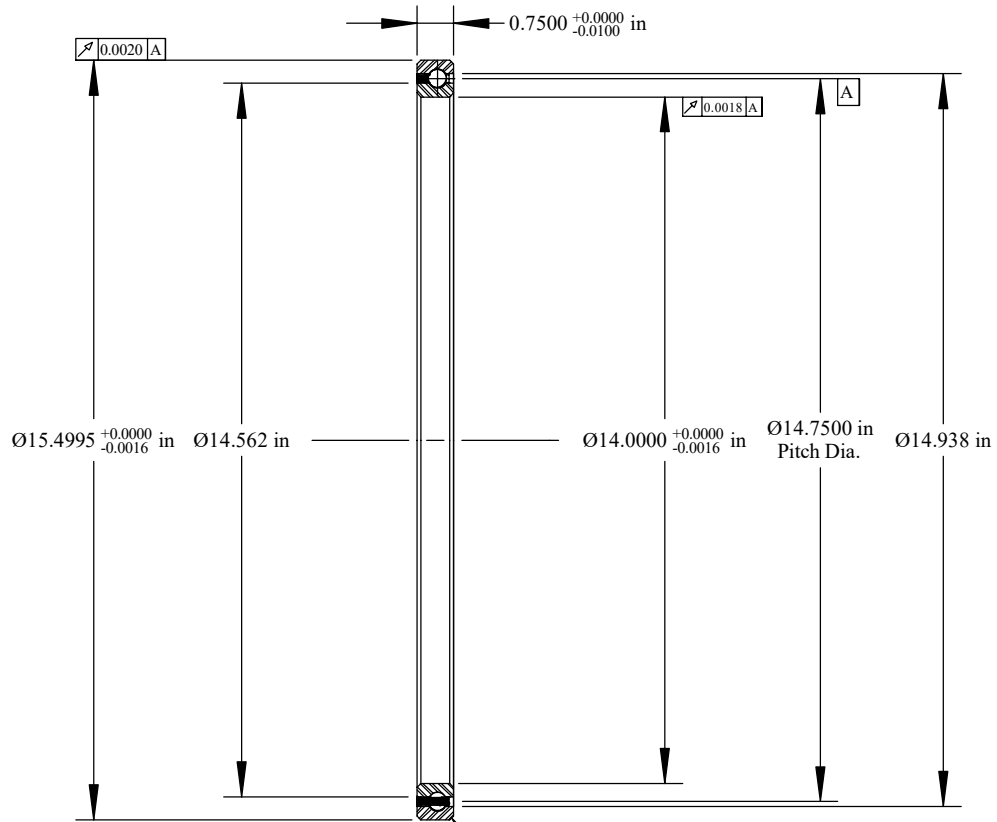
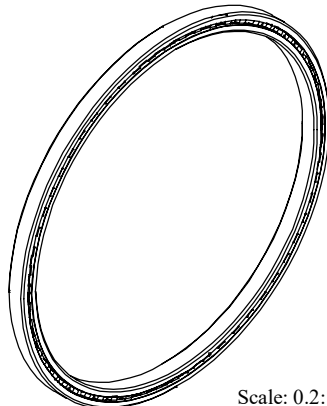


Cage Code: 704Q7

| | | | | |
|-------|---------------|------|-----------|---------|
| RevNo | Revision note | Date | Signature | Checked |
|-------|---------------|------|-----------|---------|



Scale: 0.35:1
 Will Clear 0.080
 Max. Fillet Radius
 4 Exterior Corners



Scale: 0.2:1

| | | | | |
|--|---------------|----------|--------------------------|-------|
| | OUTER | INNER | SEPARATOR | BALL |
| MATERIAL | 52100 | 52100 | BRASS | 52100 |
| HARDNESS | Rc 59-62 | Rc 59-62 | | |
| RACE RUN-OUT | OUTER | INNER | | |
| ABEC RATING | PRELOAD | | ROLLING ELEMENT QUANTITY | |
| 1 | N/A | | 59 | 3/8 |
| RADIAL LOAD | THRUST LOAD | | MOMENT LOAD | |
| DYNAMIC: 6620 Lbs. STATIC: 16650 Lbs. | N/A | | N/A | |
| RADIAL PLAY | CONTACT ANGLE | | LIMITING SPEED | |
| 0.0032 0.0052 | N/A | | 1,285 RPM | |
| LUBRICATION | SEAL | | BEARING WEIGHT | |
| LIGHT OIL PRESERVATIVE | N/A | | 6.00 Lbs. | |

UNLESS OTHERWISE SPECIFIED ALL DIMENSIONS IN INCHES

| | | |
|-----------------------|---------------------------|--|
| Designed by ML | Checked by ML | This drawing and the information contained herein are proprietary and the property of Rfbearing Corporation. |
| RF140CP0 | | Radial Thin Section Ball Bearing |
| File name RF140CP0 | Date September 7, 2017 | REVISION A Sheet 1 of 1 |

Corporate Headquarters
 18181 Praire Drive
 Covington, GA 30014
 (800) 431-1980
www.rfbearing.com