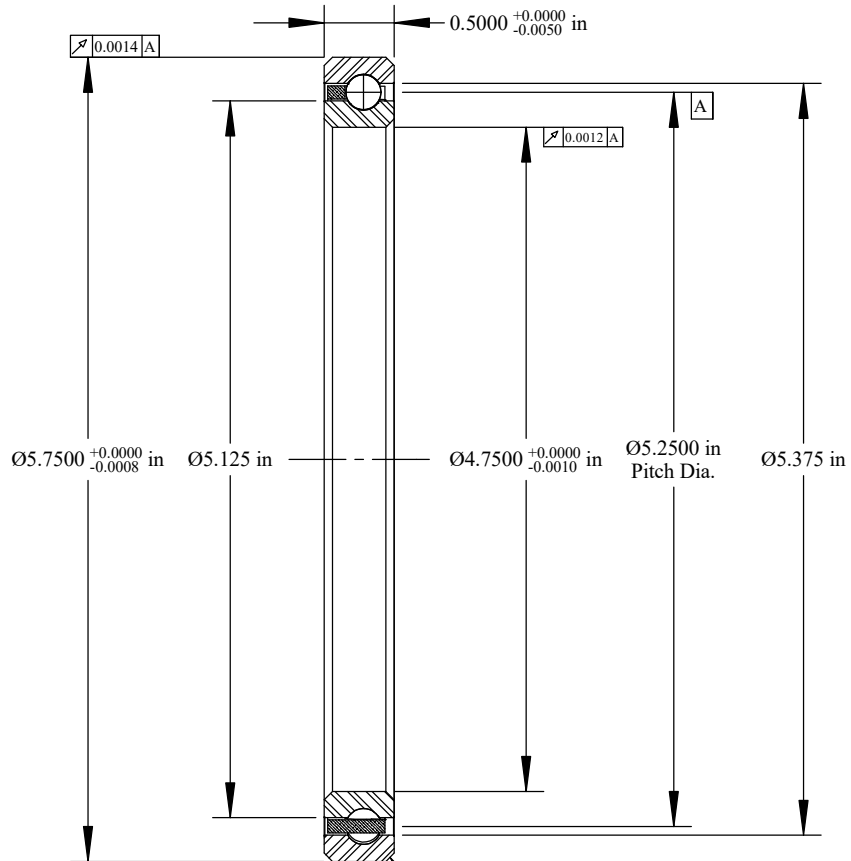
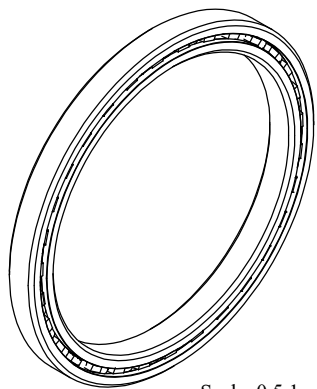


Cage Code: 704Q7

RevNo	Revision note	Date	Signature	Checked
-------	---------------	------	-----------	---------



Scale: 1:1  
 Will Clear 0.060  
 Max. Fillet Radius  
 4 Exterior Corners



Scale: 0.5:1

	OUTER	INNER	SEPARATOR	BALL
MATERIAL	52100	52100	BRASS	52100
HARDNESS	Re 59-62	Re 59-62		
RACE RUN-OUT	OUTER	INNER		
ABEC RATING	PRELOAD		ROLLING ELEMENT	
1	N/A		QUANTITY	SIZE
			31	1/4
RADIAL LOAD	THRUST LOAD		MOMENT LOAD	
DYNAMIC: 1892 Lbs. STATIC: 3530 Lbs.	N/A		N/A	
RADIAL PLAY	CONTACT ANGLE		LIMITING SPEED	
0.0020 0.0034	N/A		4,400 RPM	
LUBRICATION	SEAL		BEARING WEIGHT	
LIGHT OIL PRESERVATIVE	N/A		0.94 Lbs.	

UNLESS OTHERWISE SPECIFIED ALL DIMENSIONS IN INCHES

Designed by ML	Checked by ML	This drawing and the information contained herein are proprietary and the property of Ritbearing Corporation.	
RD047CP0		Radial Thin Section Ball Bearing	
File name RD047CP0	Date July 21, 2017	REVISION A	Sheet 1 of 1

**Corporate Headquarters**  
 15151 Prater Drive  
 Covington, GA 30014  
 (800) 431-1900  
 www.ritbearing.com