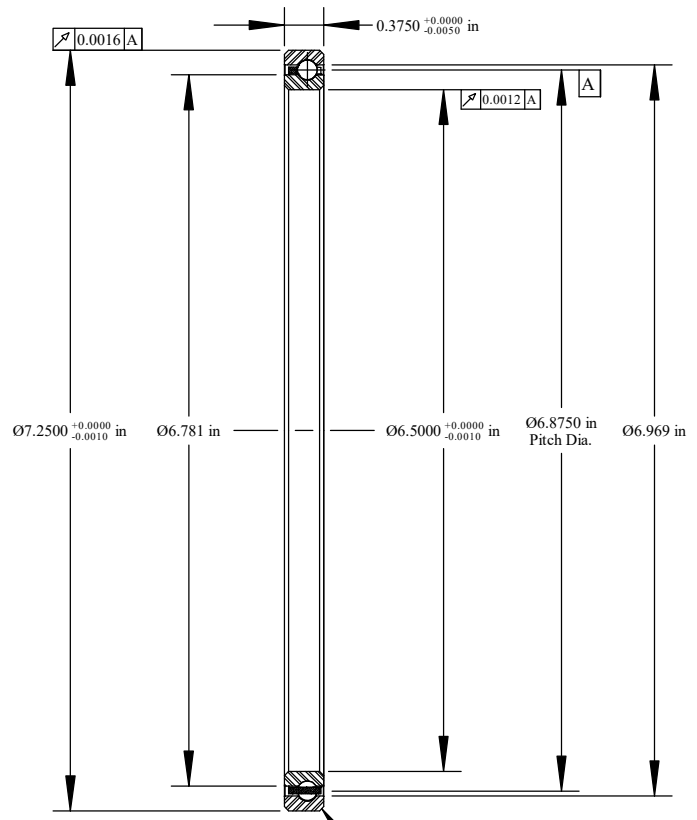


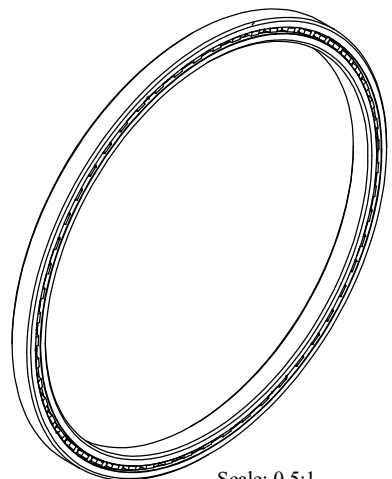
Cage Code: 704Q7

RevNo	Revision note	Date	Signature	Checked
-------	---------------	------	-----------	---------

A
B
C
D
E
F



Scale: 0.75:1
Will Clear 0.040
Max. Fillet Radius
4 Exterior Corners



Scale: 0.5:1

	OUTER	INNER	SEPARATOR	BALL
MATERIAL	52100	52100	BRASS	52100
HARDNESS	Re 59-62	Re 59-62		
RACE RUN-OUT	OUTER	INNER		
ABEC RATING	PRELOAD		ROLLING ELEMENT	
1	N/A		QUANTITY	SIZE
			55	3/16
RADIAL LOAD	THRUST LOAD		MOMENT LOAD	
DYNAMIC: 1397 Lbs. STATIC: 3310 Lbs.	N/A		N/A	
RADIAL PLAY	CONTACT ANGLE		LIMITING SPEED	
0.0020 0.0034	N/A		2,795 RPM	
LUBRICATION	SEAL		BEARING WEIGHT	
LIGHT OIL PRESERVATIVE	N/A		0.68 Lbs.	

UNLESS OTHERWISE SPECIFIED ALL DIMENSIONS IN INCHES

Designed by ML	Checked by ML	This drawing and the information contained herein are proprietary and the property of Ritbearing Corporation.
-------------------	------------------	---

RC065CP0

Radial Thin Section Ball Bearing

File name RC065CP0	Date June 26, 2017	REVISION A	Sheet 1 of 1
-----------------------	-----------------------	---------------	-----------------

Corporate Headquarters
15151 Prater Drive
Covington, GA 30014
(800) 431-1900
www.ritbearing.com

1 2 3 4