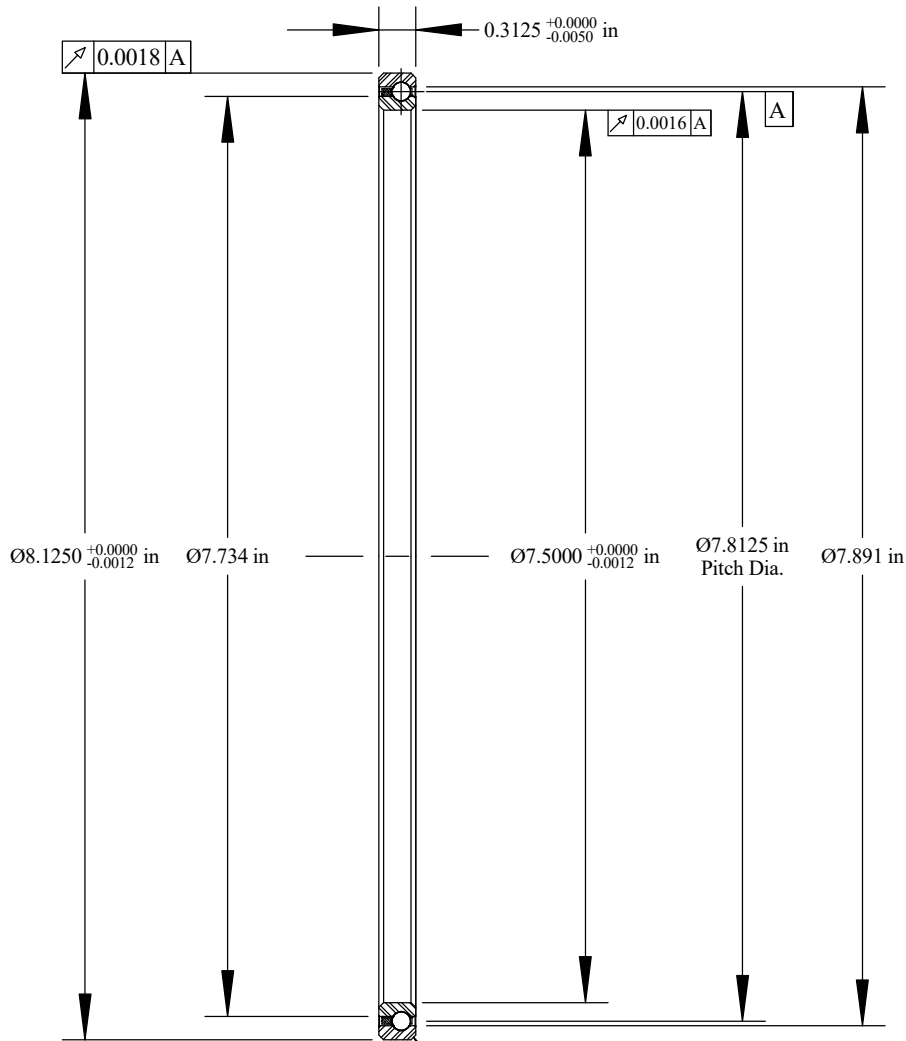
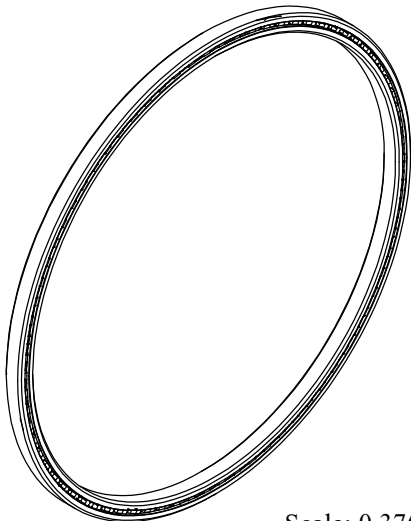


Cage Code: 704Q7

RevNo	Revision note	Date	Signature	Checked
-------	---------------	------	-----------	---------



Will Clear 0.040  
Max. Fillet Radius  
4 Exterior Corners  
Scale: 0.65:1



Scale: 0.375:1

	OUTER	INNER	SEPARATOR	BALL
MATERIAL	52100	52100	BRASS	52100
HARDNESS	Rc 59-62	Rc 59-62		
RACE RUN-OUT	OUTER	INNER		
ABEC RATING	PRELOAD		ROLLING ELEMENT	
1	N/A		QUANTITY	SIZE
			78	5/32
RADIAL LOAD	THRUST LOAD		MOMENT LOAD	
DYNAMIC: 1175 Lbs. STATIC: 3170 Lbs.	N/A		N/A	
RADIAL PLAY	CONTACT ANGLE		LIMITING SPEED	
0.0024 0.0042	N/A		2,000 RPM	
LUBRICATION	SEAL		BEARING WEIGHT	
LIGHT OIL PRESERVATIVE	N/A		0.53 Lbs.	

UNLESS OTHERWISE SPECIFIED ALL DIMENSIONS IN INCHES

Designed by ML	Checked by ML	This drawing and the information contained herein are proprietary and the property of Ritbearing Corporation.
-------------------	------------------	---

**RB075CP0**

Radial Thin Section  
Ball Bearing

File name RB075CP0	Date June 14, 2017	REVISION A	Sheet 1 of 1
-----------------------	-----------------------	---------------	-----------------

**Corporate Headquarters**  
15151 Prater Drive  
Covington, GA 30014  
(800) 431-1980  
www.ritbearing.com