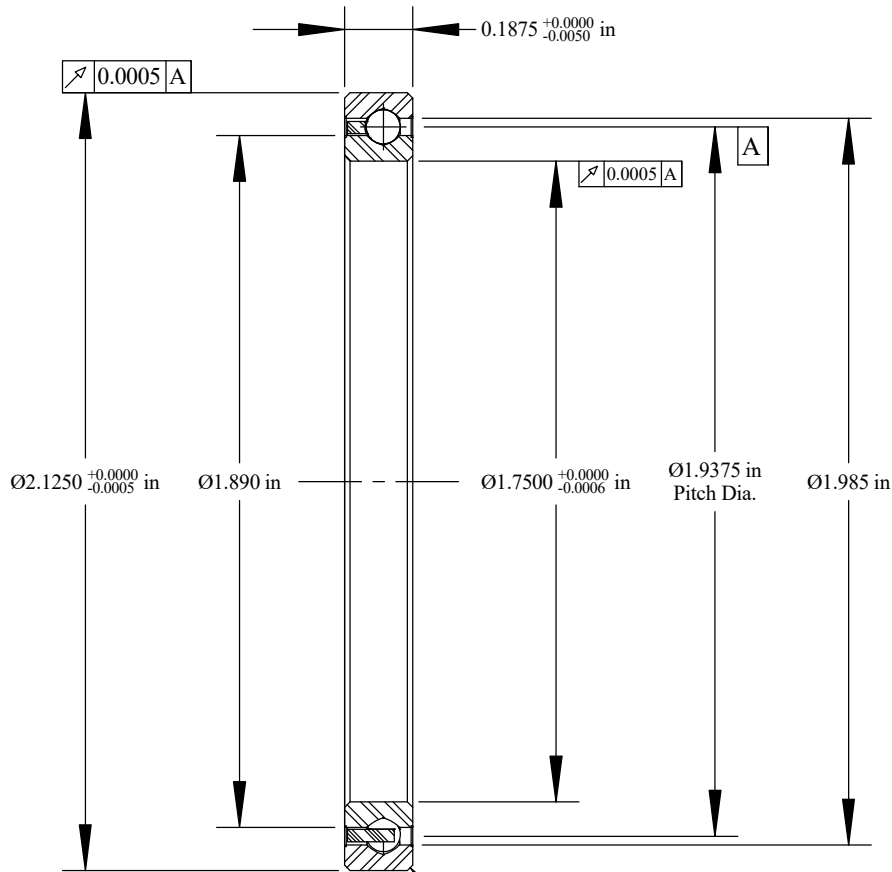


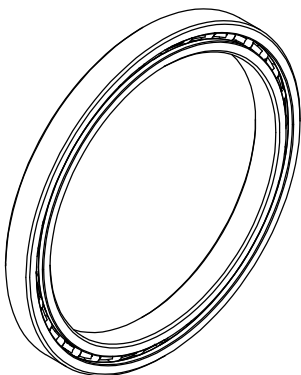
Cage Code: 704Q7

RevNo	Revision note	Date	Signature	Checked
-------	---------------	------	-----------	---------



Scale: 2:1

Will clear 0.015  
Max. Fillet Radius  
4 Exterior Corners



Scale: 1:1

	OUTER	INNER	SEPARATOR	BALL
MATERIAL	52100	52100	BRASS	52100
HARDNESS	Rc 59-62	Rc 59-62		
RACE RUN-OUT	OUTER	INNER		
ABEC RATING	PRELOAD		ROLLING ELEMENT	
1	N/A		QUANTITY	SIZE
			33	3/32
RADIAL LOAD	THRUST LOAD		MOMENT LOAD	
DYNAMIC: 319 Lbs. STATIC: 460 Lbs.	DYNAMIC: 500 Lbs. STATIC: 1,140 Lbs.		DYNAMIC: 232 Lbs. STATIC: 440 Lbs.	
RADIAL PLAY	CONTACT ANGLE		LIMITING SPEED	
0.0012 0.0022	N/A		2,285 RPM	
LUBRICATION	SEAL		BEARING WEIGHT	
LIGHT OIL PRESERVATIVE	N/A		0.05 Lbs.	

UNLESS OTHERWISE SPECIFIED ALL DIMENSIONS IN INCHES

Designed by  
ML

Checked by  
ML

This drawing and the information  
contained herein are proprietary and  
the property of Ritbearing Corporation.

**RAA17XL0**

Radial Thin Section  
Ball Bearing

File name  
RAA17XL0

Date  
March 17, 2017

REVISION  
A

Sheet  
1 of 1



**Corporate Headquarters**  
**15151 Prater Drive**  
**Covington, GA 30014**  
**(800) 431-1980**  
**www.ritbearing.com**