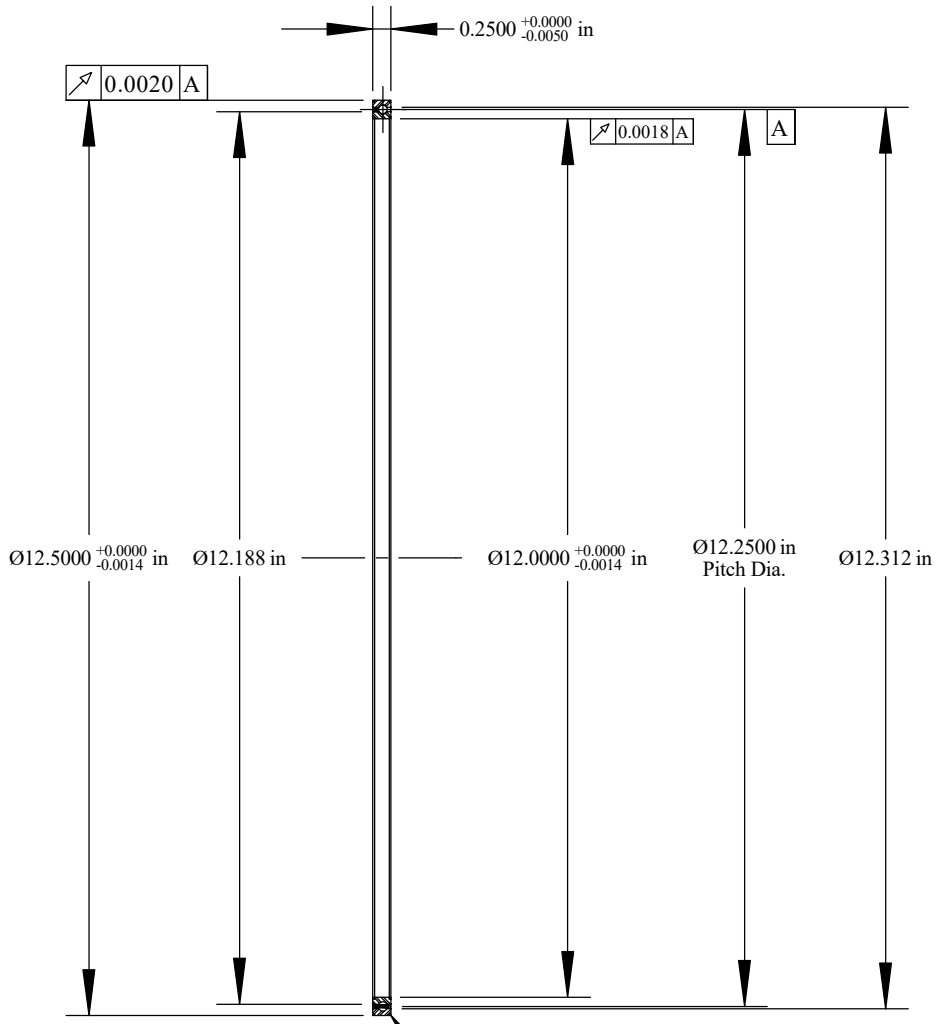
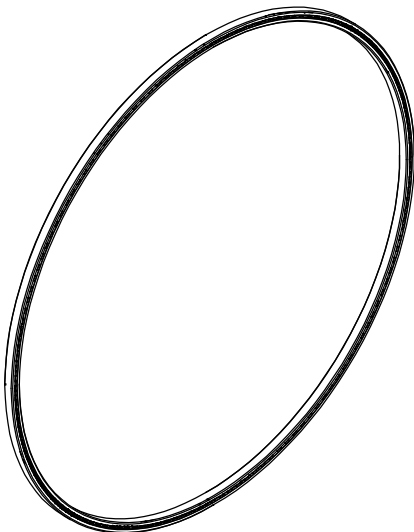


Cage Code: 704Q7

RevNo	Revision note	Date	Signature	Checked
-------	---------------	------	-----------	---------



Will Clear 0.025
Max. Fillet Radius
4 Exterior Corners
Scale: 0.4:1



Scale: 0.25:1

	OUTER	INNER	SEPARATOR	BALL
MATERIAL	52100	52100	BRASS	52100
HARDNESS	Rc 59-62	Rc 59-62		
RACE RUN-OUT	OUTER	INNER		
ABEC RATING	PRELOAD		ROLLING ELEMENT	
1	N/A		QUANTITY	SIZE
			147	1/8
RADIAL LOAD	THRUST LOAD		MOMENT LOAD	
DYNAMIC: 3,720 Lbs. STATIC: 1,078 Lbs.	N/A		N/A	
RADIAL PLAY	CONTACT ANGLE		LIMITING SPEED	
0.0028 0.0048	N/A		1,000 RPM	
LUBRICATION	SEAL		BEARING WEIGHT	
LIGHT OIL PRESERVATIVE	N/A		0.56 Lbs.	

UNLESS OTHERWISE SPECIFIED ALL DIMENSIONS IN INCHES



Corporate Headquarters
15151 Prater Drive
Covington, GA 30014
(800) 431-1980
www.ritbearing.com

Designed by ML	Checked by ML	This drawing and the information contained herein are proprietary and the property of Ritbearing Corporation.
-------------------	------------------	---

RA120CP0

Radial Thin Section
Ball Bearing

File name RA120CP0	Date March 14, 2017	REVISION A	Sheet 1 of 1
-----------------------	------------------------	---------------	-----------------