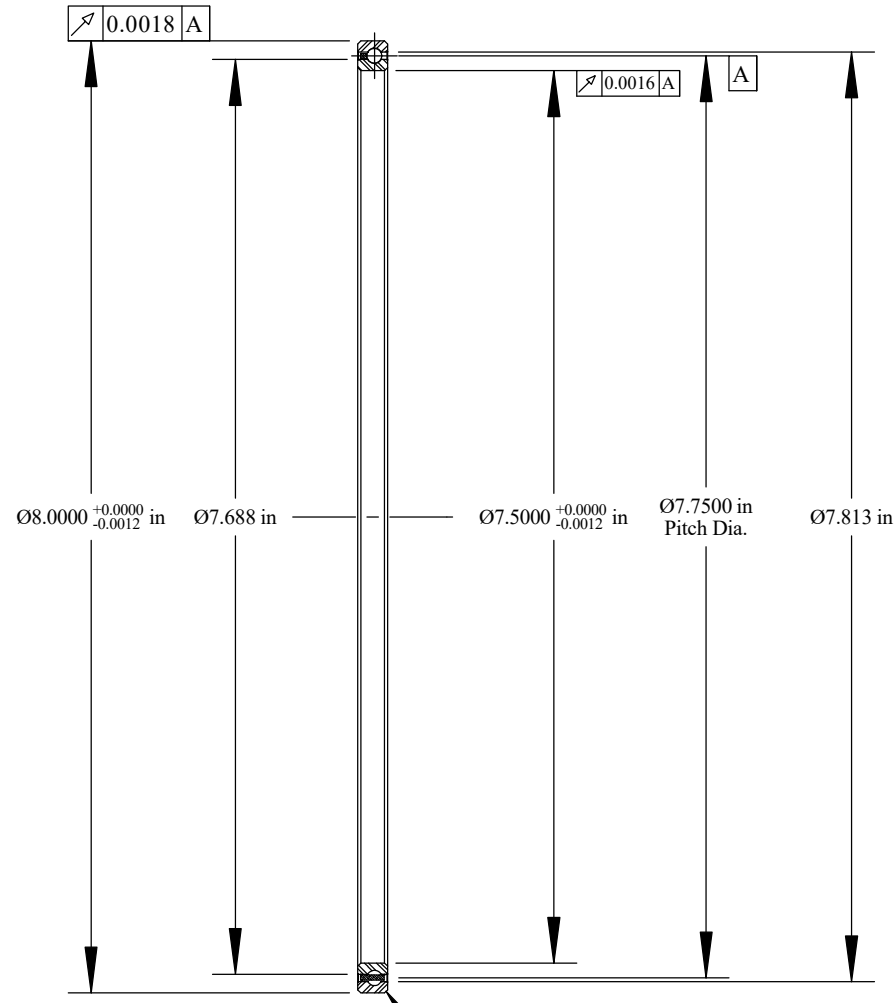
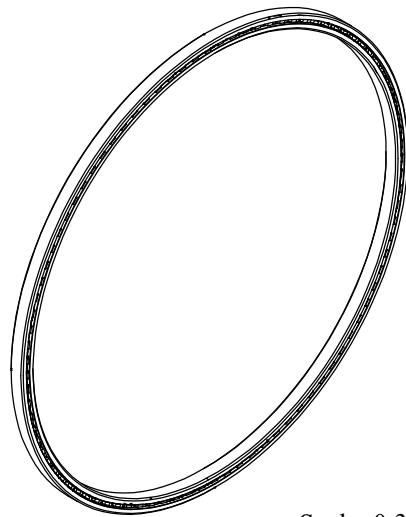


Cage Code: 704Q7

RevNo	Revision note	Date	Signature	Checked
-------	---------------	------	-----------	---------



Will Clear 0.025
 Max. Fillet Radius
 4 Exterior Corners
 Scale: 0.65:1



Scale: 0.375:1

	OUTER	INNER	SEPARATOR	BALL
MATERIAL	52100	52100	BRASS	52100
HARDNESS	Rc 59-62	Rc 59-62		
RACE RUN-OUT	OUTER	INNER		
ABEC RATING	PRELOAD		ROLLING ELEMENT	
1	N/A		QUANTITY	SIZE
			93	1/8
RADIAL LOAD	THRUST LOAD		MOMENT LOAD	
DYNAMIC: 2,350 Lbs. STATIC: 820 Lbs.	N/A		N/A	
RADIAL PLAY	CONTACT ANGLE		LIMITING SPEED	
0.0024 0.0042	N/A		2,000 RPM	
LUBRICATION	SEAL		BEARING WEIGHT	
LIGHT OIL PRESERVATIVE	N/A		0.34 Lbs.	

UNLESS OTHERWISE SPECIFIED ALL DIMENSIONS IN INCHES

Corporate Headquarters
 15151 Prater Drive
 Covington, GA 30014
 (800) 431-1980
 www.ritbearing.com

Designed by ML	Checked by ML	This drawing and the information contained herein are proprietary and the property of Ritbearing Corporation.	
RA075CP0		Radial Thin Section Ball Bearing	
File name RA075CP0	Date March 13, 2017	REVISION A	Sheet 1 of 1