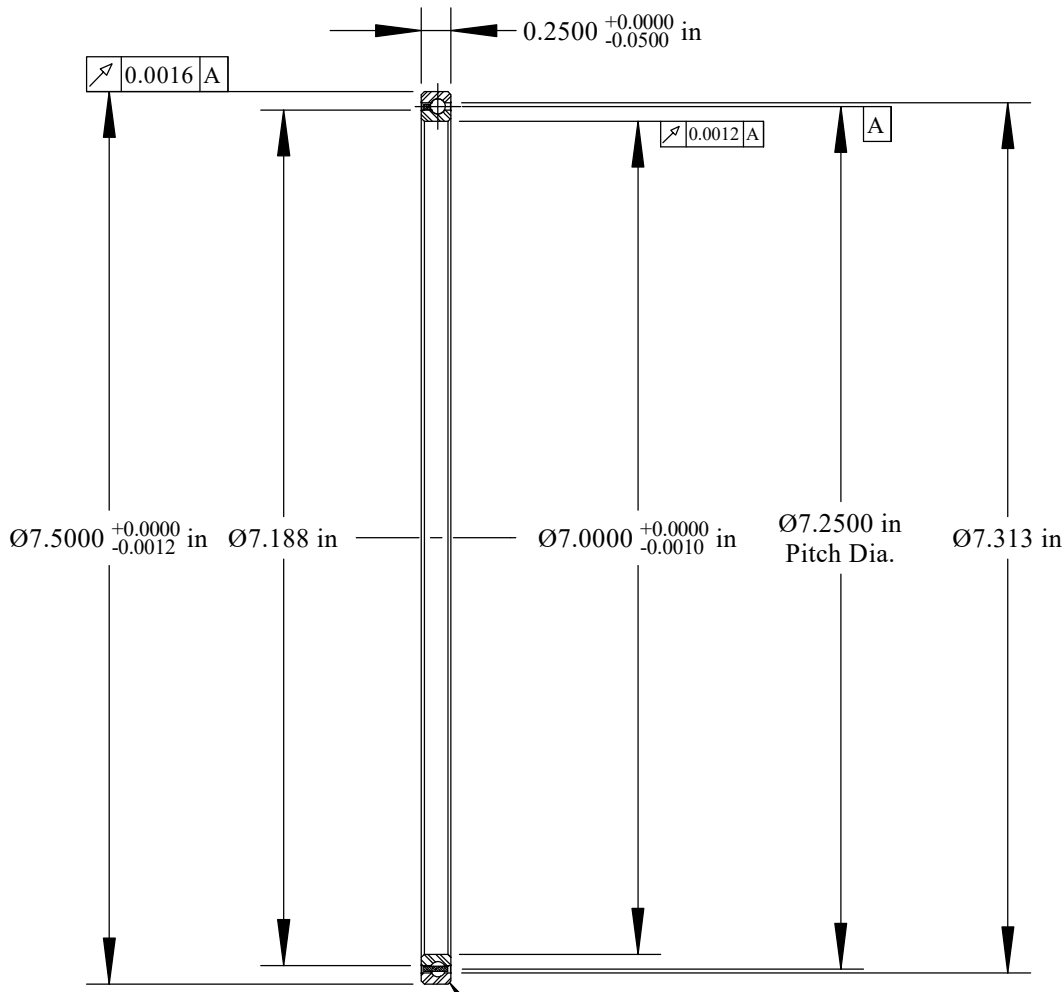
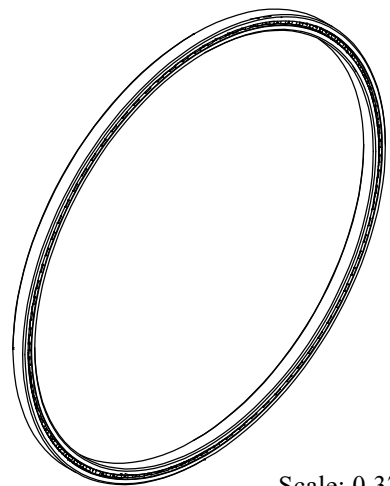


Cage Code: 704Q7

| | | | | |
|-------|---------------|------|-----------|---------|
| RevNo | Revision note | Date | Signature | Checked |
|-------|---------------|------|-----------|---------|



Will Clear 0.025
Max. Fillet Radius
4 Exterior Corners
Scale: 0.65:1



Scale: 0.375:1

| | | | | |
|-----------------------------------------|---------------|----------|-----------------|-------|
| | OUTER | INNER | SEPARATOR | BALL |
| MATERIAL | 52100 | 52100 | BRASS | 52100 |
| HARDNESS | Rc 59-62 | Rc 59-62 | | |
| RACE RUN-OUT | OUTER | INNER | | |
| ABEC RATING | PRELOAD | | ROLLING ELEMENT | |
| 1 | N/A | | QUANTITY | SIZE |
| | | | 87 | 1/8 |
| RADIAL LOAD | THRUST LOAD | | MOMENT LOAD | |
| DYNAMIC: 2,200 Lbs. STATIC: 787 Lbs. | N/A | | N/A | |
| RADIAL PLAY | CONTACT ANGLE | | LIMITING SPEED | |
| 0.0024 0.0042 | N/A | | 2,300 RPM | |
| LUBRICATION | SEAL | | BEARING WEIGHT | |
| LIGHT OIL PRESERVATIVE | N/A | | 0.31 Lbs. | |

UNLESS OTHERWISE SPECIFIED ALL DIMENSIONS IN INCHES

Corporate Headquarters
15151 Prater Drive
Covington, GA 30014
(800) 431-1980
www.ritbearing.com

| | | | |
|-----------------------|------------------------|---------------------------------------------------------------------------------------------------------------|-----------------|
| Designed by ML | Checked by ML | This drawing and the information contained herein are proprietary and the property of Ritbearing Corporation. | |
| RA070CP0 | | Radial Thin Section Ball Bearing | |
| File name RA070CP0 | Date March 13, 2017 | REVISION A | Sheet 1 of 1 |